



Measure *without* effort

www.nomics.be

Somnolter – Somnolter *BriZZy*



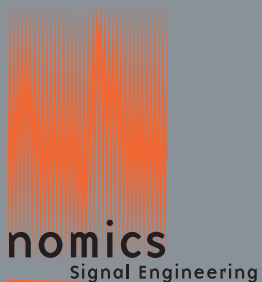
The most reliable ambulatory device to diagnose and assess therapy for Sleep Disordered Breathing (SDB), respiratory effort and mouth breathing.

In clinical practice, measurement of breathing efforts during sleep, is needed to qualify SDB events. This is the case in heavy snoring, Respiratory Effort Related Arousals (RERA) and Upper Airway Resistance Syndrome (UARS). In order to avoid the invasive gold standard oesophageal pressure recording, sophisticated analyses have already been widely used to detect these disorders. **nomics** offers an easier, non invasive, method of measuring breathing efforts during sleep.

A continuous recording of the mandibular movements allows us to detect abnormal efforts associated with SDB. Evidence of such efforts is:

- 1 Mandible oscillations in the range of the respiratory frequency (0.15 - 0.30 Hz).
- 2 An opening greater than 20% of the maximal voluntary mouth opening.

nomics Somnolter device, records this distance signal in addition to other well-known signals (nasal pressure airflow, oxymetry and body position) and is therefore the best ambulatory equipment for SDB diagnosis.



Liège Science Park
Rue des Chasseurs Ardennais, 4
4031 Liège (Belgium).

Tel : +32 (0) 4 372 93 48
Fax : +32 (0) 4 372 93 12

For further information,
see www.nomics.be or contact
sales@nomics.be



Somnolter – Somnolter^{BriZZy}

Somnolter

- The best combination for detecting SDB. **nomics** offers sleep laboratories, hospitals and physicians a sensitive, comfortable and reliable mobile sleep diagnosis equipment.
- A reliable, non-invasive measure of respiratory effort is achieved during sleep.
- The perfect solution to check all therapy devices.

Somnolter^{BriZZy}

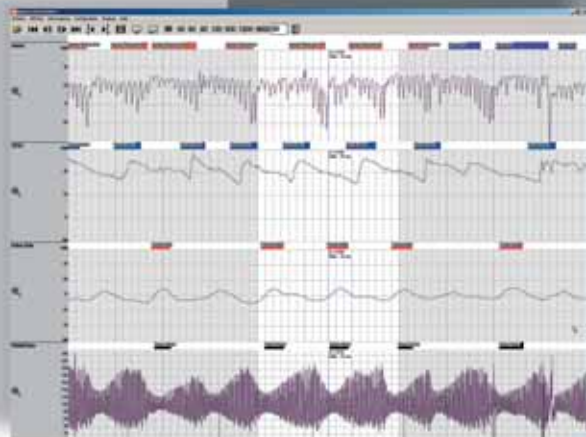
- A special version particularly comfortable and well adapted to the screening of child mouth breathing and respiratory effort.



Signals	Somnolter	Somnolter ^{BriZZy}
Mandibular Activity.	✓	✓
Body Position.	✓	✓
Nasal Pressure Airflow.	✓	
Oxymetry (<i>Nonin Medical USA</i>).	✓	

APIOS is the software used to analyze and report the study in less than 5 minutes. It helps professionals to study and diagnose SDB precisely. Its automatic features include:

- Respiratory event detection and statistics (central apnea, obstructive apnea, mixed apnea, hypopnea, UARS and RERA).
- Excessive breathing efforts analysis.
- Wake state detection.
- Oxymetry analysis (SpO₂ desaturation/resaturation, pulse rate and hemodynamic stress events).
- Full manual event editing (deletion, reclassification).
- Patient personal data viewing.
- Automatic report generation.
- Full disclosure printing.



Somnolter is manufactured by nomics, Liège, Belgium. The manufacturer works in accordance with the EN ISO13485 quality system and has the authority to mark the product with the CE mark. Somnolter and Somnolter BriZZy are class IIa devices according to Medical Device Directive (MDD), Annex 5, "ECC Directive" 93/42/ECC. Somnolter, Somnolter BriZZy, and APIOS are trademarks of nomics.